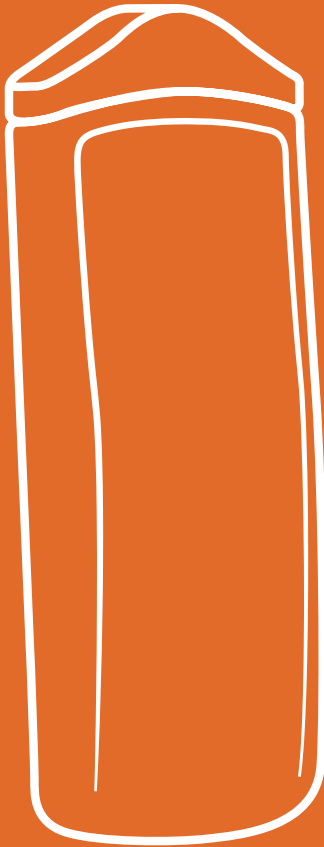


Quick Guide

# Getting Started with Instadose<sup>®</sup>



instadose<sup>®</sup>

# Introducing Instadose®

Revolutionizing the way radiation exposure is captured, read and reported, Instadose® radiation monitoring technology offers a new level of convenience, compliance and effectiveness.

Powered by two breakthrough technologies—Direct Ion Storage (DIS) technology and SmartMonitoring™ technology—Instadose® enables users to quickly, easily, remotely transmit radiation dose data via an internet-enabled computer.

Instadose® dosimeters have a built-in memory chip with an embedded, unique serial code that is assigned to the wearer. This chip helps to simplify administration and improve compliance—you no longer have to hand in your dosimeter for processing.

No more collecting and redistributing dosimeters!

This guide will help you to get to know your Instadose® USB-compatible dosimeter and guide you in setting everything up for a seamless dosimetry service experience.

## The Instadose® eco-system

The Instadose® system is composed of several products and services that work together to create a complete experience. Below are the products mentioned in this quick start guide that you will need to capture and transmit dose reads, view and manage your dosimetry account.



Internet-enabled computer with the Instadose® software installed.



Instadose® Dosimeter

# Exploring the Instadose<sup>®</sup> USB- Compatible Dosimeter.

The Instadose<sup>®</sup> USB-compatible dosimeter is a digital radiation monitoring device that is transforming how staff are monitored and safeguarded from radiation over-exposure.

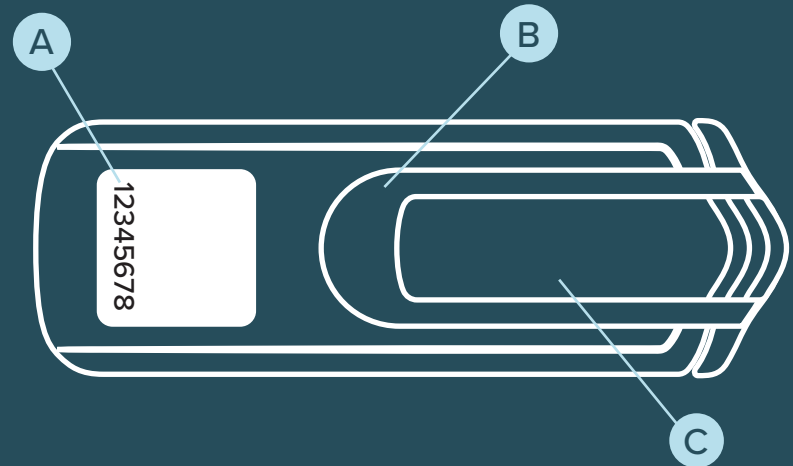
As small as a flash drive, the first generation Instadose<sup>®</sup> dosimeter provides immediate dose measurement results when connected to an internet-enabled computer. Simply connect the Instadose<sup>®</sup> dosimeter into the USB port on an internet-enabled computer and login to our secure web-based account program.

Now, wearers and administrators have immediate access to on-demand dose reads and measurement data.

Front



Back



A Serial number

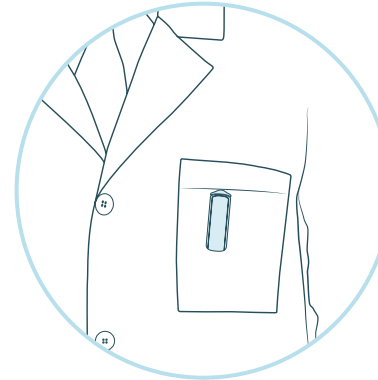
C Clip

B Rotating clip mount

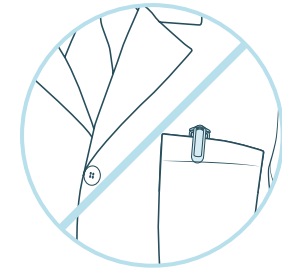


## Wearing Your Dosimeter

Wear your dosimeter on the front of your body, with the clip facing inward, somewhere between the waist and the neck. Always consult your RSO/Administrator for the correct wear position.



**DO**



**DON'T**

## Caring For Your Dosimeter

Extreme temperatures (high or low) may permanently damage internal components. Do not leave outside or in hot car. If a dosimeter gets too hot or cold, transmission is not possible until it recovers to room temperature.



Do not immerse dosimeter in water.



Do not allow dosimeter to overheat.



Do not allow dosimeter to freeze.

# Adding Wearers

In order to configure the Instadose® USB-compatible dosimeter, an account administrator will first need to add wearers in the Instadose.com online account.

**1 Sign in to instadose.com**  
Start by signing into instadose.com with your online credentials. When signed in select "Users" under the Manage Section.

**2 Add wearers**  
In the users list, select the "Add User" button situated at the top of the list, in the Action Menu.

**3 Fill out the wearer information**  
Complete all three sections of information

### Personal information:

Fill out the personal information for the wearer.

### User information:

Your username needs to be unique to the system. You will be prompted if the username entered already exists. \*Whenever possible, use the user's email address as the username.

Each user needs to have a role assigned. The account administrator role has access to all view and manage functions for the account. The Location and Group admins can only access functions within their location(s) or group(s).

The wearer role can only perform their own dosimeter readings and view reports for their assigned devices.

### Dosimeter assignment:

Select an existing dosimeter to assign to a wearer and select the body region. Select save when done. \*Only existing dosimeters can be reassigned. New/additional dosimeters must be ordered through Mirion Customer Service by emailing dsd-support@mirion.com or calling 800-251-3331 or 949-419-1000.

**1**

**Manage**

**Account Profile:** Update the pertinent information on your account.

**Devices:** View devices in your account and assign them to wearers.

**Users:** Add and modify wearers.

**Locations:** Add and modify locations.

**Calendars:** Manage instadose+ reading calendars.

**Download Software:** Download instadose reader software to perform reads from your computer.

**Quick Start Guide:** Set up your instadose account and devices.

**Initialize Device:** Initialize your device before wearing and performing reads.

**Reports**

**Reading History:** View the most recent reads in your account.

**History Detail:** Get a full history of readings for a wearer.

**Occupational Radiation Summary:** View the occupational radiation summary report.

**Form 5:** View the form 5 report.

**Dosimeters Not Read:** View users that have not read their dosimeters.

**Calendar Status Read:** View device read analysis by calendar schedule.

**Initialization Status:** View device initialization status.

**Instadose Daily Dose:** View daily dose readings from instadose+ badges.

**2**

+ Add User

User Name	First Name	Last Name	Device #	Location	Role	Active
badgeadmin	Badge	Admin	-	Test	Administrator	Yes
hrothbard@mirion.com	Heidi	Rothbard	13010106	Main	Wearer	Yes
id2-13001082	ID2	13001082	-	Main	Wearer	Yes
id2-13001123	ID2	13001123	-	Main	Wearer	Yes
id2-13001125	ID2	13001125	-	Main	Wearer	Yes
id2-13001129	ID2	13001129	-	Main	Wearer	Yes
id2-13001130	ID2	13001130	-	Main	Wearer	Yes
id2-13001156	ID2	13001156	-	Main	Wearer	Yes
id2-13001163	ID2	13001163	-	Main	Wearer	Yes
id2-13001170	ID2	13001170	-	Main	Wearer	Yes
id2-13001171	ID2	13001171	13001171	Main	Wearer	Yes
id2-13001173	ID2	13001173	13001173	Main	Wearer	Yes
id2-13001176	ID2	13001176	-	Main	Wearer	Yes
id2-13001178	ID2	13001178	-	Main	Wearer	Yes
id2-13001182	ID2	13001182	-	Main	Wearer	Yes

Export To: CSV File Format | Export

**3**

**Personal Information**

First Name\*:

Last Name\*:

Gender\*:  Male  Female

Identifier Number:  Employee ID

Date of Birth:

Email\*:

Phone Number\*:

Fax Number:::

---

High Dose Notifications:  Yes I would like to receive these emails.

Reminders:  Yes I would like to receive reminder emails.

**User Information**

**Dosimeter Assignment**

\* Indicates a required field.

Save Cancel

# Installing Software

Next, in order to initialize and reassign dosimeters, or to perform dose reads, the Instadose® software must be installed on the PC or Mac that will be used.

**1 Sign in to [instadose.com](https://instadose.com) & download software**  
Start by signing into [instadose.com](https://instadose.com) with your online account credentials. When signed in select "Download software" under the Manage Section. Save the instadose.exe file to your hard drive.

**2 Install software**  
Open instadose.exe file and follow the instructions on screen. During the process of installing the software warnings might show up on screen. Please disregard all warnings and let the installation continue (select Next to continue through to "Install" and "Finish").

**3 Pop up blockers**  
In order for the Instadose® software to work you need to update your browser to allow pop-ups.

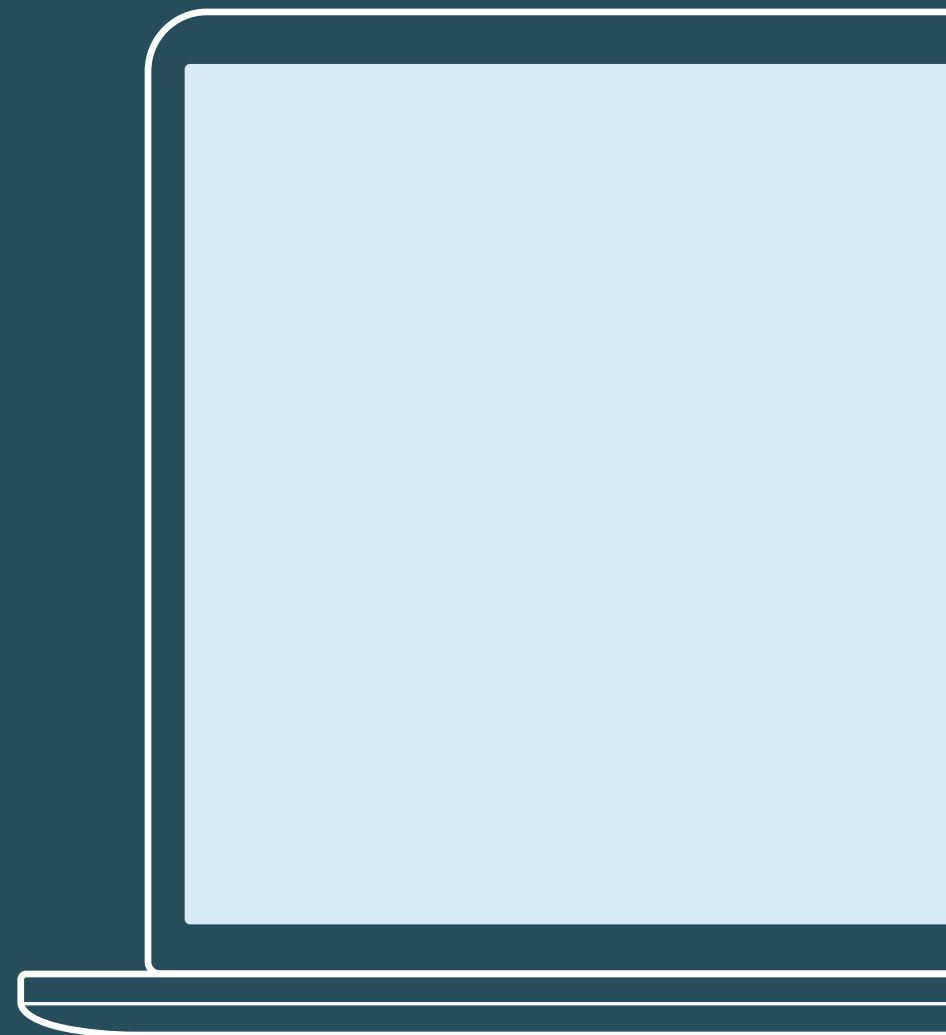
**For Internet Explorer/Edge users:**

Go to tools and select Pop-up blockers and add [instadose.com](https://instadose.com) to websites allowed.

**For Chrome users:**

1. Click the Chrome menu on the browser toolbar.
2. Select Settings.
3. Click Show advanced settings.
4. In the Privacy Section, click the "Content Settings" button.
5. In the Pop-ups Section, select "Allow all sites to show pop-ups."

Customize permissions for specific websites by clicking Manage exceptions.



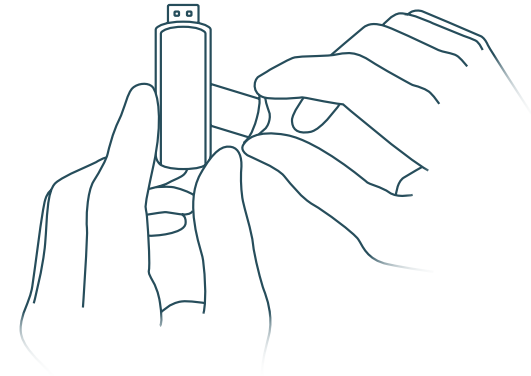
# Initialize Dosimeter

Lastly, before using the Instadose® USB-compatible dosimeter, it must be initialized.

To initialize the dosimeter, connect it to the USB port of the computer and access your online account via instadose.com. Select "Initialize device" under the Manage Section and follow the prompts on screen.

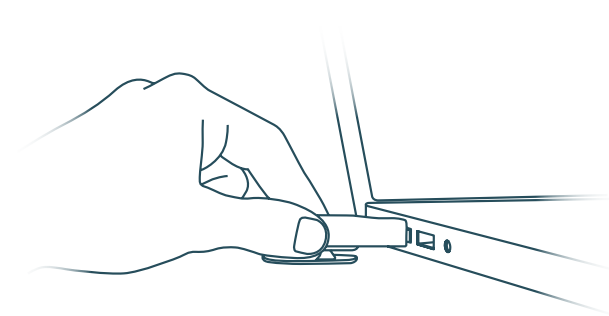
1

Pull the clip to the side to reveal the USB connection on the Instadose® dosimeter.



2

Connect the dosimeter to the USB-port of the computer and sign in to your instadose.com account.



3

Select "initialize device" under the Manage Section and follow the prompts on screen.

## Manage

[Account Profile](#): Update the pertinent information on your account.

[Devices](#): View devices in your account and assign them to wearers.

[Users](#): Add and modify wearers.

[Locations](#): Add and modify locations.

[Calendars](#): Manage instadose+ reading calendars.

[Download Software](#): Download instadose reader software to perform reads from your computer.

[Quick Start Guide](#): Set up your instadose account and devices.

[Initialize Device](#): Initialize your device before wearing and performing reads.

## Reports

[Reading History](#): View the most recent reads in your account.

[History Detail](#): Get a full history of readings for a wearer.

[Occupational Radiation Summary](#): View the occupational radiation summary report.

[Form 5](#): View the form 5 report.

[Dosimeters Not Read](#): View users that have not read their dosimeters.

[Calendar Status Read](#): View device read analysis by calendar schedule.

[Initialization Status](#): View device initialization status.

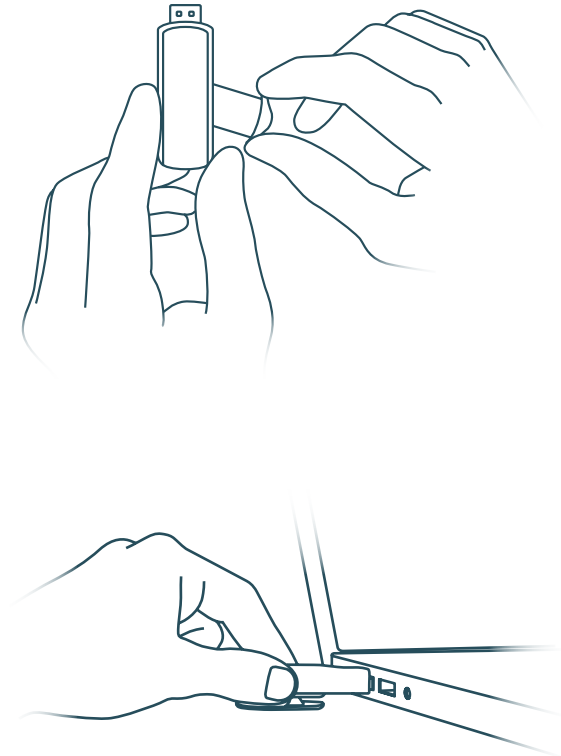
[Instadose Daily Dose](#): View daily dose readings from instadose+ badges.

# Performing Dose Reads.

To "read" the Instadose® USB-compatible dosimeter, it must be inserted into the USB port of an internet-enabled computer that has the Instadose® software installed.

1 Sign-in to your instados.com account.

2 Pull the clip to the side on the Instadose® dosimeter and connect it to the USB-port of the computer.



3 Select "Read Device" on the My Account screen on instados.com. Wait for the transmission to finish. Your dose results will load on the screen (Reading Details).

#### Quick Look

Account #:	14951	My Role:	Administrator
Location:	Main	My Device:	N/A
Assigned Wearers:	9	Available Devices:	2
Assigned Devices:	12	Uninitialized Devices:	3

Read Device



**Want to learn more?**

Visit [instadose.com](https://instadose.com)



**MIRION**  
TECHNOLOGIES